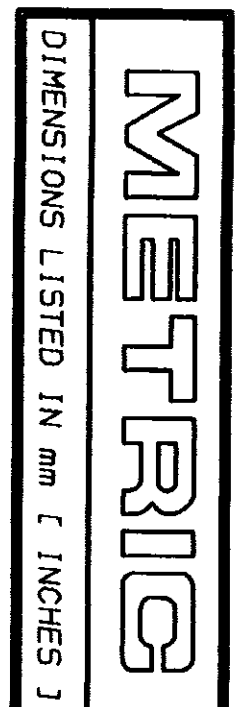
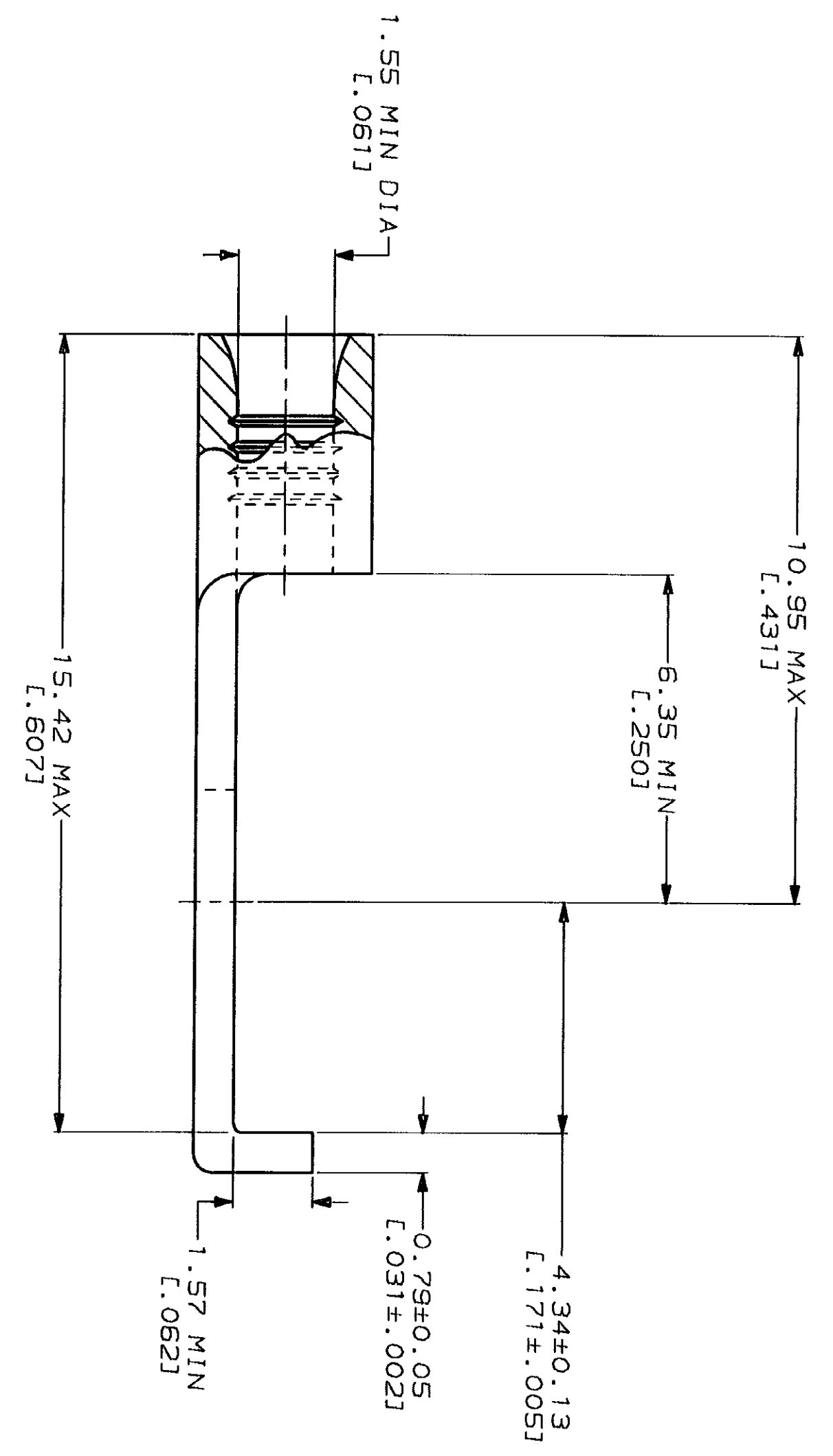
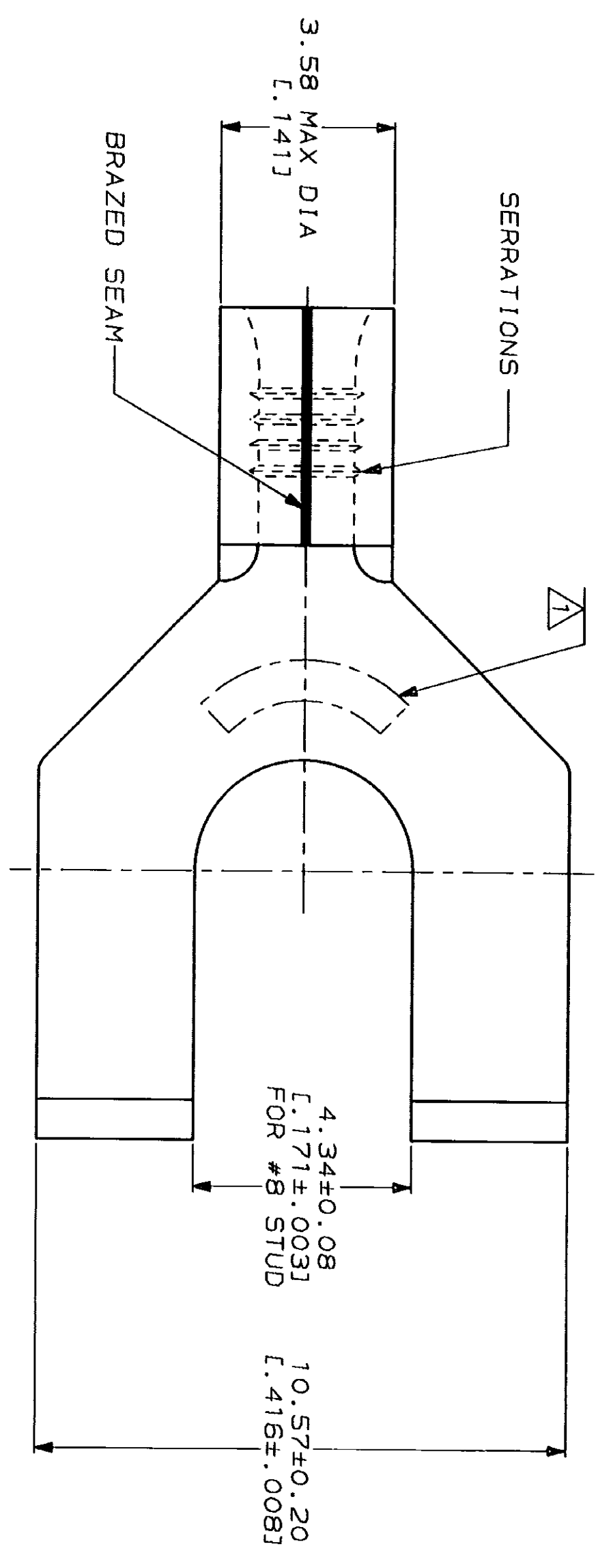


| LOC | QTY | REV | DESCRIPTION | DATE | APP'D |
|-----|-----|-----|--------------------------------------|--------|-------|
| G | 14 | | REV. RDRW. & SH PKG PER 0720-0040-93 | 4-8-93 | JL |



| | |
|--------------------------------|--------------------------------|
| AMP WIRE RANGE | JL E13288 Listed |
| 22-16 AWG SOLID OR STRANDED | 22-16 AWG SOLID OR STRANDED |
| LR7189 Certified | MILITARY P/N AND CLASS |
| 22-16 AWG SOLID OR STRANDED | NOT APPLICABLE |

STAMP AMP 22-18* APPROX AS SHOWN
22-16 TERMINALS ARE STAMPED 22-18 IN
ACCORDANCE WITH MILITARY SPECIFICATION
MIL-T-7928; COMMERCIAL WIRE RANGE IS 22-16



**AMP INCORPORATED
CUSTOMER SERVICE SYSTEMS**

FOR ADDITIONAL
PRODUCT INFORMATION OR
COPIES OF DRAWINGS
AND TECHNICAL DOCUMENTS
1-800-522-6752

FOR APPLICATION
TOOLING INFORMATION
1-800-722-1111

FOR ORDER ENTRY
1-800-526-5142

MAX RECOMMENDED OPERATING
TEMPERATURE: 170°C MAX

VOLTAGE RATING:
NOT APPLICABLE

WIRE CROSS SECTIONAL AREA RANGE:
0.26-1.65mm² [509-3,260] CIR MILS
SOLID OR STRANDED

DO NOT SCALE PRINT.
UNLESS SPECIFIED
DIMENSIONS IN mm FINISHES
TOLERANCES ON:
1. PLC DEC #
2. PLC DEC #
3. PLC DEC #
ANGLES

MATERIAL
COPPER PER
ASTM B-152
ANNEALED

FINISH
TIN PLATE
0.00254 [L.000100] MIN
THK PER MIL-T-10727

| | | | |
|--------------------------|----------------------------|--------------------------|---------------------------|
| DR 4-8-93 TA BRINKMAN | CHK 4-8-93 DA PATTERSON | APPD 4-8-93 DE MILLER | APPD 4-8-93 JL HECKLEY |
| PRODUCT SPEC | | | |
| APPLICATION SPEC | | | |
| WEIGHT | | | |

| QUANTITY | PACKAGE TYPE | PART NO |
|----------|------------------|------------|
| 100 | LOOSE PIECE, BOX | 8-323124-1 |
| --- | LOOSE PIECE | 323124 |

AMP
AMP Incorporated
Harrisburg, PA 17105-3608

TERMINAL, FLANGED
SPADE, SOLISTRAND™

| | | |
|------------|-----------|--------------|
| SIZE | CAGE CODE | DRAWING NO |
| SCALE 10:1 | 00779 | 323124 |
| | | SHEET 1 OF 1 |